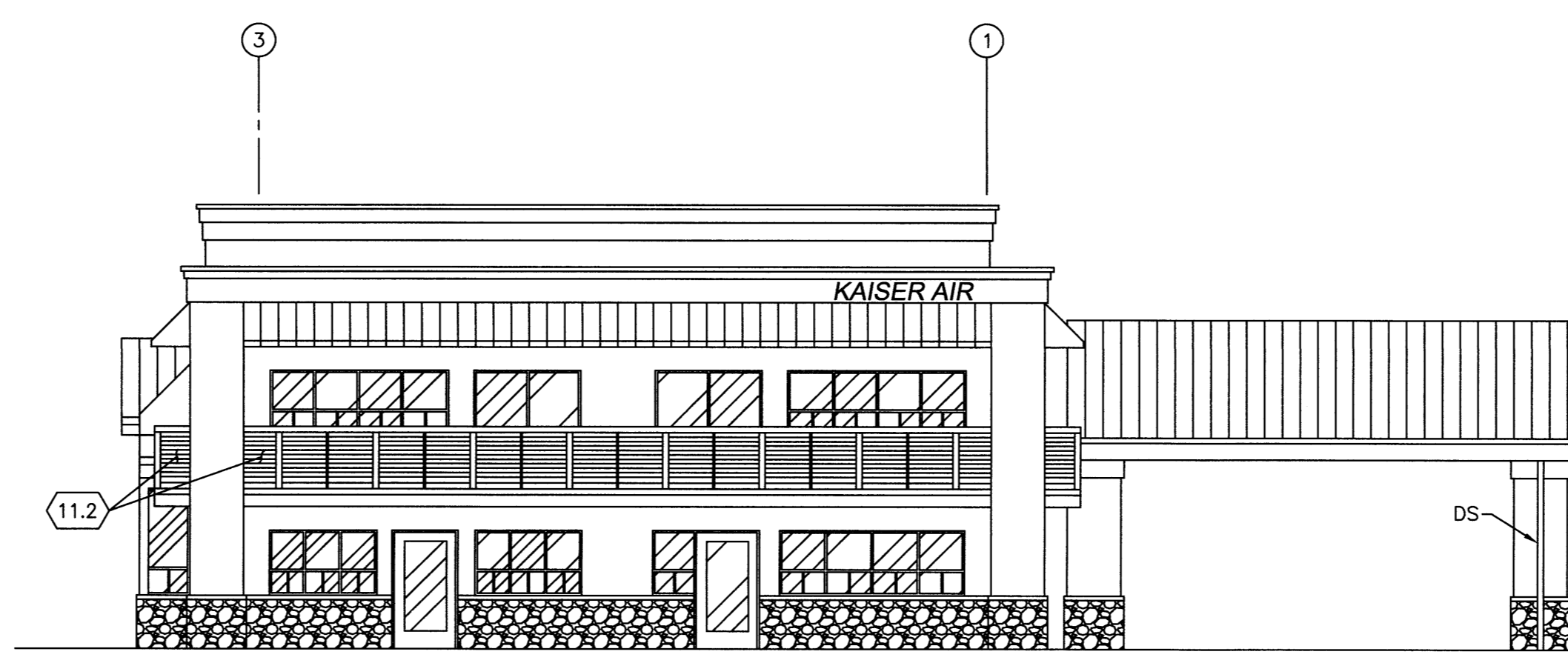
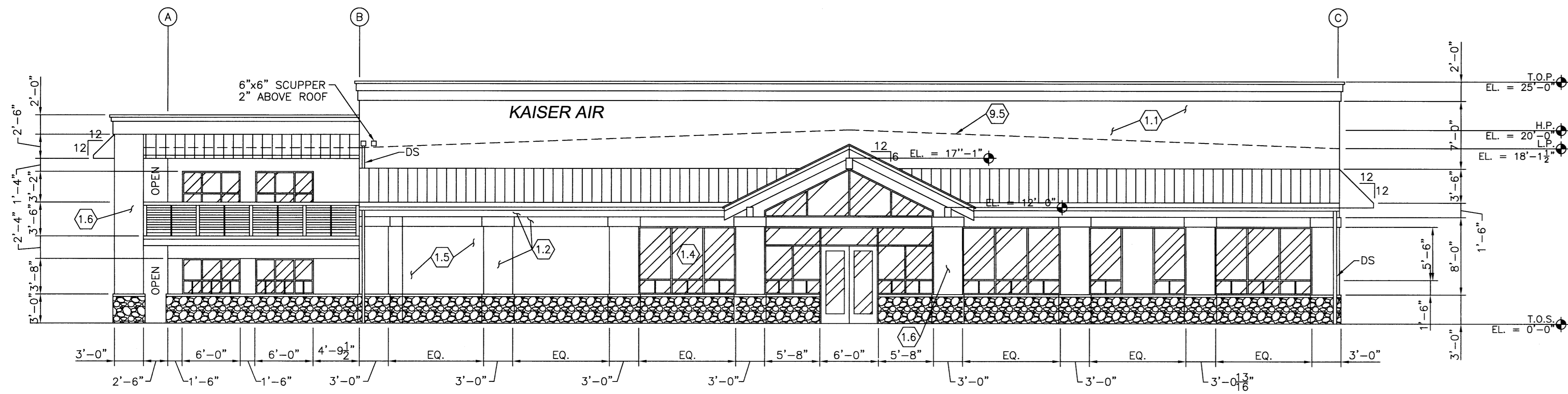


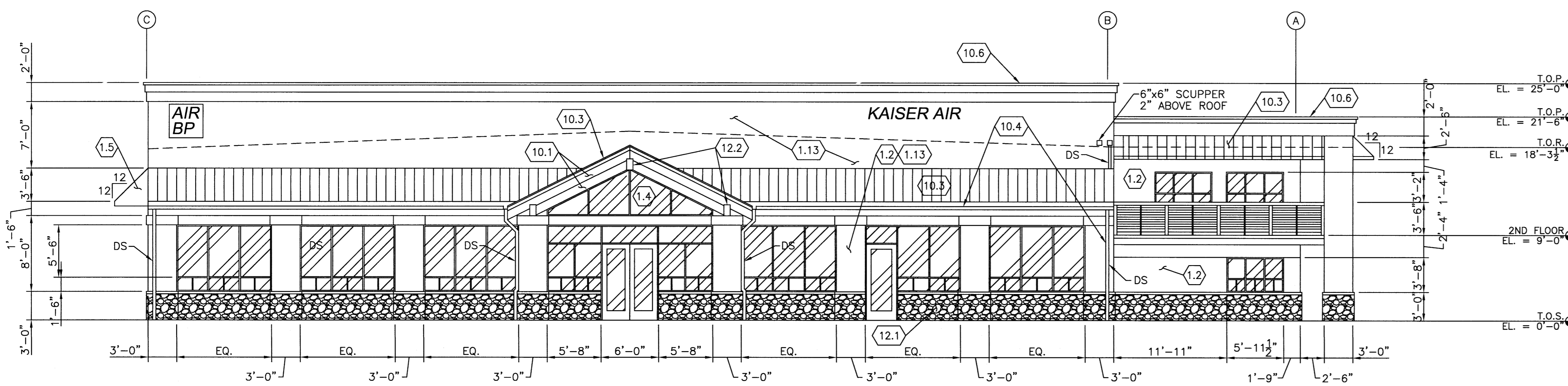
EAST ELEVATION



WEST ELEVATION



SOUTH ELEVATION (FRONT VIEW)



NORTH ELEVATION (JETWAY VIEW)

Elevation Notes:

- 1.1 Exterior: 2" metal panel o/c lateral girts (color: Benjamin Moore "Richmond Bisque" - E54)
- 1.2 Exterior: (E) 2x4 brg. wall w/ exterior foam buildout (color: see 1.1)
- 1.3 Exterior: (E) 2x4 studs w/ (E) 5/8" gyp. bd. (remove (E) stuçem) & install 2" metal panel (color: see 1.1)
- 1.4 4 1/2" anodized aluminum storefront (clear)
- 1.5 Exterior: 2" metal panel o/c (E) lateral girts w/ 6" metal studs @ 16" o.c. & 5/8" gyp. bd. (color: Benjamin Moore "Tarrytown Green" - HC134)
- 1.6 Exterior column: steel frame w/ 2" metal panel.
- 1.7 Interior: (E) 2x4 brg. wall w/ 5/8" gyp. bd. e.s. (patch & repair).
- 1.8 Interior: 2x6 @ 16" o.c. brg. wall w/ 5/8" bd. ea. side (6" mtl. studs @ 16" o.c.)
- 1.9 Interior: 2x6 @ 16" o.c. non-brg. wall w/ 5/8" bd. one side (6" mtl. studs @ 16" o.c.)
- 1.10 Interior: 2x4 @ 16" o.c. non-brg. wall w/ 5/8" bd. one side (3 1/2" mtl. studs @ 16" o.c.)
- 1.11 Interior: 2x6 @ 16" o.c. non-brg. wall w/ 5/8" bd. one side + R-19 insul. (6" mtl. studs @ 16" o.c.)
- 1.12 Interior: 2x4 frame around (E) steel
- 1.13 Exterior: Non-brg. 6" mtl. studs @ 16" o.c. w/ 2" metal panel & 5/8" gyp. bd. + R-19 insul.
- 2.1 (E) steel frame: clean, prime & paint.
- 2.2 (N) tube steel frame.
- 2.3 (E) diag rod w/ floor anchor; clean, prime & paint.
- 2.4 (N) tube steel.
- 3.1 Stairs to 2nd floor w/ 7" riser and 11 treads and one handrail each side @ 34" above tread nosing. (See 11.5 for post and cable info.)
- 4.1 Header
- 5.1 Direct Vent Gas Fire Place. "Napoleon -BGD90" 50,000 BTU w/ decorative brick panel 50"x50" opening.
- 5.2 18" raised stone hearth.
- 6.1 Fireproof canvas awning & frame.
- 7.1 Mtl. joist framing
- 8.1 Tee-bar clg.
- 9.1 (E) WD framed floor to remain.
- 9.2 (E) GYP BD clg. to remain.
- 9.3 (E) Conc. Slab to remain
- 9.4 (E) WD framed roof & gyp. bd clg to remain.
- 9.5 Remove (E) mtl. roof & install (N) insl. mtl. roof.
- 10.1 Metal insul. panel
- 10.2 Metal tube steel roof support - See struct.
- 10.3 Metal insul. roof.
- 10.4 Gutter & D.S.
- 10.5 Scupper
- 10.6 Fagn. Cap (color: Benjamin Moore "Charleston Brown" - E66 plus Kaiser Air Teal)
- 11.1 Duradek Ultra Deck Membrane System o/cdx
- 11.2 42" alum. high rail.
- 11.3 Dens glass soffit (painted to match bldg.)
- 11.4 1/2" alum. spacer w/pvc vinyl cap flashing - provide pilot holes for fasteners per "Duradek" specs.
- 11.5 4"x4" alum. post max 5'-0" o.c. w/vertical 2" x 1" picket spacers @ 3'-0" w/ stainless steel cable spaced @ 3 1/8" o.c. & provide 4" plate foot rail 4" above deck.
- 11.6 26 ga. gsm drip flash 1' 4" x 6" PVC drip clip.
- 11.7 2x4 WD spacer painted.
- 11.8 "Duradek" membrane collar 4" above deck.
- 11.9 Heat weld collar to deck membrane.
- 11.10 Mini 'L' trim w/butyl tape & fastener.
- 11.11 Urethane continuous caulking.
- 11.12 Sheathing paper (moisture barrier) overlap membrane 2" min.
- 11.13 26 ga gsm flash (1' 4"x6")
- 11.14 "Duradek" membrane fully adhered; Extend 6" min. up wall
- 12.1 Arizona Stone wainscot (Coronado - Carolina Rubble - Sandstone)
- 12.2 16" x 6" steel tube.
- 13.1 Porch lift (Commercial vertical platform lift) by Thyssen Krupp Access "EZE #144"
- 14.1 26-ga-gsm flashing.
- 14.2 Caulk
- 15.1 Foam w/texcoat finish.
- 16.1 1 1/2" depressed conc. Slab - in-fill to (E) slab w/conc.

REVISIONS	NO.
FLASCHER	2/19/21

Richard Dort Architect Inc.  
 849 E. Stanley Blvd., Suite 212  
 Livermore, CA 94550  
 RichardDortArchitectInc.com  
 rarddas@aicomcast.net or 925-449-3884

Owner: KAISER AIR  
 P.O. Box 2626 - Airport Station  
 Oakland, CA 94614

Sheet Title  
 KAISER AIR  
 ELEVATIONS

Project Title  
 KAISER AIR JET CENTER REMODEL  
 2240 AIRPORT BLVD.  
 SANTA ROSA, CA

DRAWN	REM
CHECKED	RD
DATE	2-12-09
SCALE	AS SHOWN
JOB	
SHEET	

A3.1

